

Step Three:
Review results. Select a column header to sort. To export to Microsoft Excel click the Export button below the results view.

Criteria: Division ID = 1, Store ID = 1018,1043,1071,33, Open Time = 07:00, CloseTime = 23:00, Time Period = LASTMONTH, Start Date = 10/01/2006, End Date = 10/31/2006.

View: 002. Alarm Event Summary

DIVISION ID	STORE ID	STORE NAME	TOTAL ALARM COUNT	DISTRIBUTION %	# OF REASON CODES FOUND IN TOTAL COUNT	# OF CASHIERS FOUND IN TOTAL COUNT	# OF REGISTERS FOUND IN TOTAL COUNT	# OF UPCs FOUND IN TOTAL COUNT
1	33	Store 33	17.42		11	0	23	0
1	1018	Store 1018	16.41		1	1	2	0
1	1043	Store 1043	36.29		12	53	22	0
1	1071	Store 1071	29.08		2	1	0	0
(Total Records: 4)								

View: 002b. Alarm Event Summary Totals

Total Alarm Count	2923
Distribution %	100.00
# of Reason codes	12
# of Cashiers	22
# of Registers found in Total Count	22
# of UPCs	0

Sensormatic® SmartEAS® Web Reporting

Tyco Safety Products announces the availability of a new solution for obtaining SmartEAS® reports accessible anytime from any internet connection. Sensormatic® SmartEAS® Web Reporting provides an easy-to-use, centralized web portal to review business critical data.

Web Reporting allows retailers to view all EAS alarm management and people counting data from any Internet enabled device. This data can be collected from multiple retail locations on a regional or enterprise level, or from a single specified store location.

By combining the power of web reporting with SmartEAS® UltraLink®, retailers can take full advantage of alarm management and people counting data.

Based on the retailer's specific needs, data can be organized and displayed into customized reports detailing events such as EAS alarm counts, or people counting.

Web Reporting is offered through two reporting models: Tyco managed or retailer managed. The retailer-managed model allows authorized users to access secure SmartEAS® reports within the retailer's network. The Tyco managed reporting model allows authorized users access through www.smarteesweblink.com

Benefits:

1. Easy access to customized reports.
2. No additional reporting software required on individual computers to view reports.
3. Improves operational efficiencies by reducing expenses associated with maintaining hand written logs and creating reports manually.
4. Helps focus attention on potential problem areas through the use of exception reporting:
 - a. People Counting - highlights conversion rate
 - b. EAS system performance - provides diagnostics reporting information
 - c. Deactivation – measures deactivation events
 - d. Alarms - addresses the real cause of alarm events, which may vary from store to store

Tyco Managed Model Key Advantages

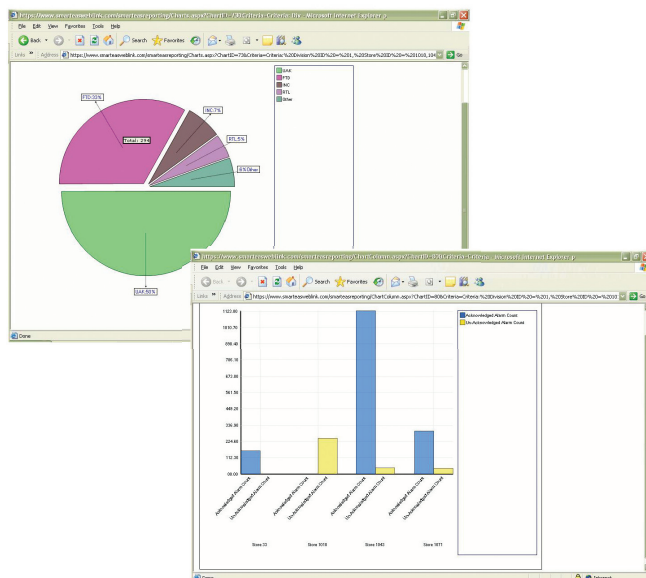
- Secure data resides at Tyco's central location for a monthly access fee
- Minimal IT resources and infrastructure required
- Reports accessible via email or website
- Variety of report types and features available
 - PDF format
 - excel spreadsheets
 - graphs, tables or charts

Retailer Managed Model Key Advantages

- Secure data resides at retailer's corporate location
- One time software license fee per UltraLink®
- Collected data never leaves retailer's network
- Variety of report types and features available
 - PDF format
 - excel spreadsheets
 - graphs, tables or charts

SmartEAS® Web Reporting Features:

- **User-Friendly web interface**
Retailers can easily access and query SmartEAS® data via a secure website or receive automated e-mails with attached reports showing key metrics.
- **Feature-rich, customizable reports with graphs**
Point and click filtering tools help retailers query EAS and people counting data based on their specific reporting needs. Generated reports can be viewed in table, graph or chart formats.
- **Convenient report tools**
Reports can be downloaded and exported into excel spreadsheets or PDF format for further customization or long term storage.
- **Store operations information**
Easily review and analyze SmartEAS® data to identify trends, potential shrink issues, as well as EAS system diagnostics.
- **Language specific**
Reports delivered in user's language - English, German, Spanish, Italian and French



System Requirements

SmartEAS® Web Reporting uses the UltraLink® SmartEAS® system which must be connected to the retailer's corporate network; similar to a computer or other device that is connected to a network. The connection to the network requires both a hard wire hook-up and additional software configurations on the network's system for the UltraLink® to transmit data.

The connections and software configurations will require the cooperation of the retailer's IT (Information Technology) group.