



- > Identify individuals or vehicles
- > Monitor staff and visitors
- > Observe movement
- > Record activities
- > Analyse productivity

CCTV Solutions

Watching over people and property

The use of closed circuit television to detect crime and enhance public safety is increasingly recognised as an effective way to provide surveillance for your building.

ADT specialises in providing CCTV systems which meet the requirements of a variety of property types, such as retail premises,

educational establishments, industrial sites and offices. CCTV can be simple or complex, for example to identify individuals or vehicles, to alert an operator to the presence of an individual or to visually patrol a pre-defined area. Once objectives have been agreed, an appropriate mix of system components can be recommended.

ADT. Always There.

why choose CCTV?

observation

Where real time observation of images is required, a system may be designed to prompt the operator by configuring pre-set views, pre-determined camera sequences or providing triggers from events such as alarms or motion detection.

monitoring - a fast response service

ADT's highly sophisticated CCTV remote monitoring centre can respond to system activations 24 hours a day, 365 days of the year. The monitoring of CCTV footage is fundamentally different to other alarm activations. We have specially trained CCTV analysts to determine how the images presented should be responded to. Our experienced operators can pan, tilt and zoom cameras taking control of any situation that may arise.

a camera to suit your needs

ADT has a full range of cameras to suit all types of CCTV purposes, whether you need external pan and tilt cameras with weatherproof housings or a discrete dome camera for use internally. ADT has access to Tyco manufacturing facilities worldwide which provide a complete array of almost any type of camera.

digital CCTV

With Digital CCTV technology there is no need to replay hours of tape to search for an incident. CCTV footage can be searched by simply entering a date and time or applying a mouse pointer to a timeline on a monitor screen. If the incident time is not known, a search can be made by marking an area on the image and asking the system to search for activity in that area. Very quickly a list of events will be offered for review. During all these operations, normal recording continues, uninterrupted.

EH&S

With the increase in litigation cases, employers and public authorities are ever more concerned with providing a safe environment for staff and public alike. CCTV can assist in many cases in proving the exact circumstances behind an EH&S litigation claim.

point-of-sale monitoring (POS)

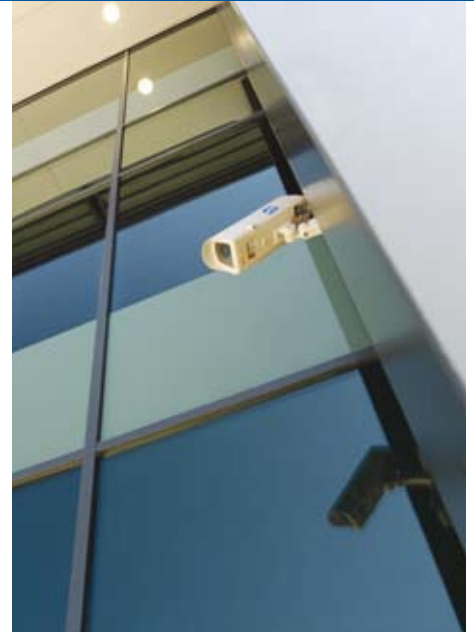
Internal shrinkage is a major problem for the retail sector. By using CCTV to monitor cashier activity, these losses can be significantly reduced. When linked to the CCTV system, video footage of each transaction, together with details of the transaction provide irrefutable proof of who sold what, to whom, at what price and when. Reports are generated, providing powerful tools to eliminate fraud, collusion, sweethearting, refund abuse and cash theft.

enhancing manufacturing

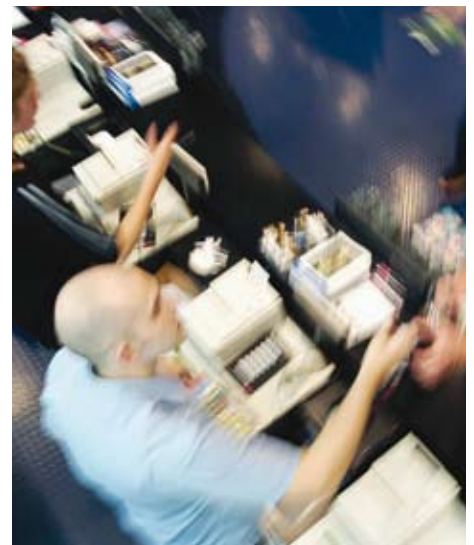
It is possible to place cameras overlooking production lines in order to analyse activity. Employees can be monitored for work efficiency and current business procedures can be studied and evaluated.

Australia
Phone 131 ADT
www.adtsecurity.com.au

New Zealand
Phone 0800 111 ADT
www.adtsecurity.co.nz



ADT has a full range of cameras to suit all types of CCTV purposes, whether you need external pan and tilt cameras with weatherproof housings or a discrete dome camera for use internally.



A **tyco** COMPANY