

Challenger Version 8

User categories.

AN16

This document provides details of the programming feature that allows different alarm control facilities to be specified for some (or all) of the areas that a user can control.

A programming flow chart is provided at the end of this document for reference.

User Categories are used in the Alarm Groups.

Alarm Groups provide us with enormous flexibility in specifying the area/s and alarm system control functions for different types of users, for each arming station, for control inputs and some automatic alarm system control functions such as auto reset and auto arm & disarm.

Normally, the functions specified in the Alarm Group apply to all the areas assigned to the Alarm Group. This is a problem if we want some of the areas to be controlled differently from others. Not so!

As versatile as they already are, the Alarm Groups can have "User Categories" assigned to them to provide a higher level of versatility and features.

User categories can modify the specified alarm system control functions for any number of the areas specified in the Alarm Group.

User Categories are assigned to Alarm groups to :

- 1) Allow us to specify "arm & reset only" restrictions for some (but not all) of the areas in the Alarm Group.
- 2) Allow us to provide the "timed disarm" feature or "user counting" for any number of the areas in the Alarm Group.

e.g. A User is allowed control of areas 1, 2, 3, 4, 5, & 6. (These are the areas specified in his alarm group)

Without User Categories we would have to allow full alarm system control on all of the user's areas or place specific restrictions on all of the six areas.

With User Categories we could provide the user with:

- Full alarm system control on areas 1, 2, & 3.
- Arm & reset functions only on areas 4 & 5.
- Timed Disarm function on area 6.
- User Counting function on area 3.

Accessing the Install Menu:

To display menu option 19 (Install Menu) in the User menu, the alarm group of the user code must allow it. The Master Installer is User Number 50. The default master PIN code (User 50) = 4346. The master PIN code should be changed. The Alarm Group assigned to User 50 should never be changed.

The Installer menu is accessed via the User menu and is User menu option 19.

The system must be disarmed before it is possible to use the Installer Menu.

To disarm the system:

4 3 4 6 (Master PIN code) **<OFF>** then **0** (Select all areas) **<ENTER>**

To access the Install Menu:

<MENU> **4 3 4 6** (Master PIN code) **<ENTER>** Accesses User Menu.
then **1 9** **<ENTER>** Selects Install Menu

USER CATEGORY FUNCTIONS

1. Time Disarm of areas

Areas which are assigned to an alarm group and are programmed as *Areas To Time On* in User Category Data will have Time Disarm functions applicable.

User Categories 1 to 6:

When a user enters a code, it will disarm the programmed areas and set a timer running.

- The area will arm again when the timer has expired unless other timers are running.
- The area may be armed by the user by re-entering their code, provided the display does not show *Ending*. If other timers are running and the code is re-entered, the individual user category is cleared but the area is not armed.
- The timer may be extended by the user re-entering their code when the display shows *Ending* for their user category.
- A buzzer will be sounded as a warning when the timer is running out and the area is about to arm.

User Category 7:

Operates exactly as per User Categories 1 to 6 above, except that when the timer expires and the area/s re-arm

a "Dead Man Alarm" (Guard Failed to Check In) message is reported to the monitoring station in all formats except for Securitel PIN.

User Category 8 - Special Function : User Count for each Area

When a user enters a code to disarm, it will disarm the programmed areas and increment a user count, for each area, by 1.

- When the user enters their code again to arm, the user count for each area will be decreased by one.
- The display will always show the user count.
- The area may be armed by the user by re-entering their code to arm, provided the user count for each of the areas to be armed, is down to 1 before the code is entered. i.e. The next code will reduce the count to 0 & arm the area/s.
- Timers do not operate for user category 8.
- Can count a maximum of 255 Users per Area.

2. Arm/Reset of areas

Areas which are assigned to an alarm group and are programmed as *Areas to Arm/Reset* in User Category Data will have only Arm/Reset functions applicable.

When a user enters a code it will arm the programmed areas, regardless of any timers running, (but cannot disarm), or it will reset alarms in the programmed areas.

3. Time Disarm/Arm Reset

Areas which are assigned to an alarm group and are programmed both as *Areas To Time On* and *Areas To Arm/Reset* will have both Time Disarm and Arm/Reset functions applicable.

When a user enters a code, all of the Time Disarm functions are applicable except that when re-entering a code, the Arm/Reset function will apply and the system is armed regardless of any timers running.

4. No user category Function

Areas which are assigned to an alarm group but are not included in the user category data, will have standard alarm system control functions applicable as specified in the alarm group. eg. code Enter to arm/disarm etc.

- Notes:
1. The amount of time that the timer runs is programmed on Installer menu option 6 - Times or 2 - Area Database.
If the timer is set to zero, the user category will not time out. The user category functions in exactly the same way except a timer does not run and will therefore not arm areas on expiry.
 2. The amount of time that a warning appears and an audible alert sounds is programmed on Installer menu option 6 - Times.
 3. User Categories are assigned to alarm groups in Installer menu option 5 - Alarm Groups.
 4. A user cannot operate user categories unless the arming station they are using has the same user categories in its alarm group.

1. Plan the User Category requirements and fill out the programming sheets.

Blank programming sheets are found at the rear of the Version 8 Programming guide.

In this application you will need to consider the following Installer Menu databases:

- 2. Area Database
- 3. Arming Stations
- 5. Alarm Groups
- 6. Timers
- 10. Text Words
- 13. Time Zones
- 15. User Category Data
- plus Users. (USER MENU Option 14.)

2. Program any TEXT WORDS required for area names, user category names, alarm group names, etc. that are not already provided in the extensive word library.

TEXT WORDS are programmed in Installer Menu Option 10: - Text Words.

Up to 100 custom words can be added to the library.

From the Install Menu select Option 10.

Use <*> to scroll through the list of programmable words.

3. Program any TIMEZONES that may be required in order to limit the functions of particular Users or Arming Stations to specific time periods.

TIMEZONES 1 to 24 are programmed in Installer Menu Option 13.

TIMEZONES 1 to 24

From the Install Menu select Option 13.

There are 24 "Real-time" timezones in the system, based on the built-in real-time clock.

Select a Timezone number to program and enter the start and end times and days for each segment

Each Timezone may have up to 4 segments, each programmed with a Start time, End time and Days.

e.g.

Timezone 0 is always valid 24 hours every day. It may be used wherever a 24 hr Timezone is required.

TIMEZONE 1: RETAIL COUNTER STAFF
(Normal trading hours)

		START	END	
Tz 1.1	Mo Tu We Th	08:30	18:00	_ _ _
Tz 1.2		08:30	21:30	_ _ _
Tz 1.3		08:30	13:00	_ Sat _
Tz 1.4		00:00	00:00	_ _ _



4. Program the AREA DATABASE for the area/s relevant to the User Category functions you wish to use in the system.

The areas determine how the system is partitioned, and therefore provides the ability to limit users to performing functions only in the area/s relevant to their role.

The Area Database enables certain timing and event parameters to be specified for each individual area used in the system.

Scroll through the options to locate the relevant programming records described below.

If you are using the Timed Disarm User Category function and require a relay output to activate a warning device when the area/s are about to arm, program the WARNING EVENT FLAG.

If you are using the Timed Disarm User Category function and require the time the area is disarmed to be different from the time required for other areas in the same User Category, program the AREA DISARM TIME. If all areas in the User Category require the same disarm time, ignore this option.

5. Program the USER CATEGORIES to define the special functions and/or restrictions required and the area/s they apply to.

A Separate User Category would usually be programmed for each type (or category) of user that will require user category functions.

e.g.
Cleaner. To time disarm the area/s they need to work in.

Staff. To time disarm work area/s after hours.
Guard/Patrol. To time disarm area/s for "Guard failed to check-in" monitoring.

Staff. To restrict staff to Arm & Reset Only on area/s that are only to be disarmed by senior staff members.

Staff in access controlled areas. To disarm, then re-arm an area based on the user count for the area. (Category 8)

Program an appropriate name for the User Category

AREA DATABASE PARAMETERS are programmed in Installer Menu Option 2.

From the Install Menu select Option 2.

Select an Area number to program.

Enter an Event Flag number between 17 & 256 as long as it is not used elsewhere in the system

Enter a time period in minutes if required.

USER CATEGORIES are programmed in Installer Menu Option 15.

From the Install Menu select Option 15.

Select a User Category number to program. Remember that User Category 8 is the special User Count function and will not time.

Enter the number of a word from the word library

Area/s to Time On

This record lists areas programmed for Time Disarm.

When a user enters a code, it will disarm the programmed areas and set a timer running. When the timer expires, the area re-arms.

Enter the area numbers required

The area/s listed in this option must also be listed in the Alarm Group that the User Category is assigned to, in order for the function to be enabled on those areas.

Area/s to Arm/Reset Only

This record lists areas programmed for Arm/Reset.

When a user enters a code, they may arm the programmed areas or reset alarms in the programmed areas, but not disarm.

Enter the area numbers required

The area/s listed in this option must also be listed in the Alarm Group that the User Category is assigned to, in order for the function to be enabled on those areas.

Alternate User Category records.

It is possible to program two sets of alternate values to apply when alternate alarm groups are in use.

As above

e.g. Alarm group 31 has been assigned User Category 4. Alarm group 31 has an alternate alarm group-32.

User category 4 can be programmed with alternate Areas To Time On/ or Arm/Reset which will be used when alarm group 31's alternate alarm group (32) is in use.

The User Category 4 function must be set to YES in both the main & alternate alarm group, 31 & 32.

e.g. Alternate User Category values would allow a user to be allowed to time disarm areas during the day, but be further restricted to arm & reset only on those areas after hours.

6. Program or modify the ALARM GROUPS required for Users and any Arming Stations in your system that require user category functions.

ALARM GROUPS are programmed in Installer Menu Option 5.

An Alarm Group defines the area/s, Alarm control functions and User menu options available to the User or Arming Station to which it is assigned.

From the Install Menu select Option 5.

Alarm Groups 1 to 10 are Hard Coded and cannot be modified. They are intended for LCD Arming Stations and the Master Installer Code.

Select an Alarm Group to program.

Alarm Groups 11 to 13 are "All Area Masters" with different levels of User Menu Access.

Alarm Groups 14 to 29 are intended for Arming Stations that control a single Area and offer a low level of User Menu Access.

Alm Grp 14 = Area 1
Alm Grp 15 = Area 2 etc.

(Refer to V8 Programming Guide:- Appendix 1, Table 4 for more specific details)

Alarm Groups 30 to 138 have no default programming and are intended to be programmed for Users or Arming stations according to the system requirements.

Program an appropriate name for the Alarm Group	Enter a text word number from the word library
Specify the Area/s assigned to this Alarm Group. Must include any areas to be used in the User Category function/s required.	Enter the area number/s required
Specify whether the Alarm Group is going to be assigned to Users.	Set to YES or NO
Specify the Alarm System Control functions and features that this Alarm Group will allow (Arm, Disarm, Reset etc.)	
Alarm System Control YES Alarm System Control functions will be allowed, depending on other settings specified in the Alarm Grp. NO No Alarm System Control functions will be allowed, regardless of other settings in the Alarm Group.	Set to YES For User Category functions to operate, Alarm System Control must be set to YES.
Set the following Alarm System Control options as required. See the Challenger Version 8 Programming guide or AN1:-Basic Alarm System Programming, for details.	Set to YES or NO as required
Prompt With List of Areas	
Can User Activate Keyboard Duress	
Reset System Alarms	
Disable Auto De-isolate	
Arm & Reset Only Disarm Only Alarm Reset Only	
Auto Isolate Unsealed Inputs	
Forced Arming When Unsealed Inputs	
Prevent Forced Disarming	
Modem Access	
User Categories Assign the User Category/s that are required in this Alarm Group. If more than one User Category is assigned, the system will use the lowest common User Category number. e.g. If a user with an alarm group containing User Cat's 3 & 4 enters his code at an Arming Station with an alarm group which includes User Cat's 1, 2, 3, & 4; the result will only activate User Category 3.	Set to YES or NO as required for each of the 8 User Categories

Prevent Arming If Category Not Timing.
If you wish to prevent a user with the "timed disarm" user category function from starting the timer on an area that is already disarmed without a timer running, set this option to YES.

Set to YES or NO as required

A user category timer, when expired, will arm an area, so setting this option to YES will prevent an area being armed when it was originally disarmed by a user without user category functions.

e.g. Prevents a cleaner starting their user category to time on an area if they arrive while staff are still on the premises.

Specify the USER MENU OPTIONS that this Alarm Group will allow Access to.

Set YES or NO for each option in the list as required.

For User Menu Options 1 to 24.

NOTE: It is most unwise to allow any client or end user etc. to have access to Option 19:- Install Menu!

(See the Challenger Version 8 User Guide for specific details on these User Menu options)

An Alarm Group can be restricted to be valid only during a specific time period. To achieve this a TIMEZONE is assigned to the Alarm Group.

Specify a Timezone if required.
"No Timezone" specifies the Alarm Group is ALWAYS valid.

If a Timezone restriction has been specified for an Alarm Group, you may assign an ALTERNATE ALARM GROUP that will take effect when the Timezone on this Alarm Group is not valid.

Specify an alternate Alarm Group if required.
You must then program the alternate Alarm Group to specify the new Area/s, functions, options etc. that will be relevant.

7. Any Arming Stations in your system that are to be used for User Category functions may require programming or modification of the ARMING STATION DETAILS.

ARMING STATIONS are programmed in Installer Menu Option 3.

Specify the Arming Station (RAS) number/s to be polled by The Challenger panel.

From the Install Menu select Option 3.

If the Arming Station is not yet powered up and addressed, polling the RAS will cause a "RAS Fail" condition.

Enter the number/s of the RASs to be polled.

It is recommended that RASs not be programmed to be polled until they are actually powered and addressed correctly.
(See TS0801 / TS0003 / TS0804 etc. Installation guides for details)

Specify the details for each RAS to be polled.



Program the relevant options for each Arming Station. Options not relevant to this application are not described here and should be disregarded at this stage.

Area Alarm Group

The User Category options required on an Arming Station are specified in the Area Alarm Group.

Menu Alarm Group

(The Menu Alarm Group is typically the same as the Area Alarm Group)

Set other Arming Station Details as required. See Challenger Version 8 Programming Guide or AN1:-Basic Alarm System Programming for details

Restricted User Category to Disarm

The Arm/Reset user category function will not be allowed.

8. Program the TIMERS. There are several timing functions which may need the time period recorded or changed from the default values.

Program the relevant timers. Options not relevant to this application are not described here and should be disregarded at this stage.

User Category Times

-Records the amount of time (in minutes) applicable to each of the 8 User Categories.

The User Category time is only relevant if the User Category has any areas specified as "Area/s to Time On" for the Timed Disarm function.

The User Category Time is not applicable to User Category 8 (Counter). Must be left at 0.

A Separate record is used for each User Category

Warning Time (minutes)

-before a user category timer expires.
The Warning time is the period before the user category time expires during which the user must enter their code to extend the disarm time if required.
An audible alert is provided during the warning time.

Select the RAS to be programmed.

The Area Alarm Group defines the area/s, alarm control and user menu options available at this arming station. Assign an appropriate alarm group from the factory defaults or the alarm groups you have programmed specially for the system.

The Menu Alarm Group defines the user menu options available at this arming station if the requirements are different from those specified in the Area Alarm Group.

If you wish to restrict the user category functions at this arming station to Disarm and extend timers only, set this option to YES.

TIMERS are programmed in Installer Menu Option 6.

From the Install Menu select Option 6.

Enter a time period as required

Repeat for each User category to be used for time disarm functions

- Notes:
1. If set to 0, the category will not time out. PIN Code will be required to re-arm.
 2. The User Category Time will be over-ridden by the "Area Disarm Time" if programmed in the Area Database.

Enter a warning time period as required

The warning time must always be shorter than the shortest user category time and should be at least 2 minutes

9. To enable Users to perform any alarm control and/or user functions using their PIN code, program USERS.

The client will normally have the authority to program users into their system. This programming option may not need to be performed by the Installer except to ensure that a user is programmed into the system who has the necessary authority to program the remaining users.

It is important that the client is provided with details of the User's Alarm Groups to facilitate this. Space is provided at the rear of the User Guide for a summary of the User's Alarm Groups that the client will use when adding and/or changing users in their system.

Select the Option to CREATE a user

Select a USER NUMBER to program.

Note: User number 50 is the Master Installer Code. The PIN code for user 50 should be changed from the factory default of 4346, but no other parameter should be altered.

Assign an ALARM GROUP to the user to specify the area/s and functions allowed. The User Category functions required are specified in the User's Alarm Group.

If the User Category functions are being performed via Card Readers, a Door Group needs to be assigned to the user. See AN11:-Programming Readers on theChallenger LAN, for details.

It is not necessary to assign a Floor Group for this application.

Program the USER NAME.
Note: Only possible for Users 1 to 200.

Program the User's PIN CODE.
Note: Only possible for Users 1 to 1000.

USERS are programmed in the User Menu Option 14.

From the User (Main) Menu select Option 14.

Select the CREATE option

Enter a User number.

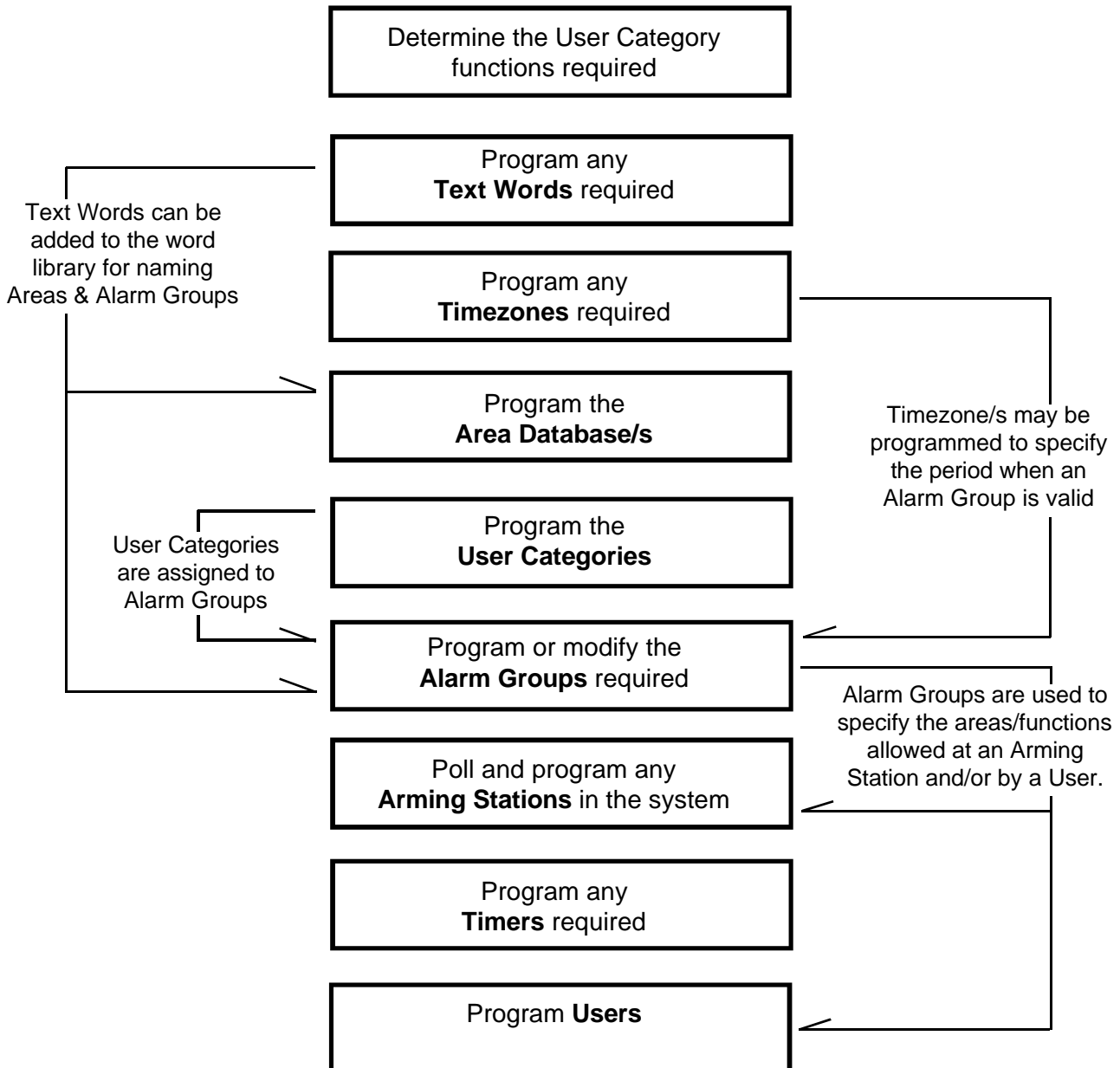
Enter an Alarm Group number

Enter a Door Group number

Enter Text for the User's name

Enter a PIN code of between 4 and 10 digits

SUGGESTED PROGRAMMING SEQUENCE



The Challenger is Designed and Manufactured by:

Tecom Systems Pty. Ltd.
 A.C.N. 005 523 562
 8/36 New Street
 Ringwood 3134
 Victoria Australia
 Telephone: 03 9879 6422 Facsimile: 03 9879 4774

© Tecom Systems Pty. Ltd. 1995